

EXHIBIT F: INTERNAL CONNECTIONS PRICE PROPOSAL

INELIGIBLE PRODUCTS, IF ANY, SHOULD BE PUT ON SEPARATE LINE AND NOTED AS SUCH

EQUIPMENT	MANUF.	PART NO.	DESCRIPTION	QTY	UNIT	EXTENDED
	<i>(See detailed Price Proposals in required format on pages 61 to 76)</i>					



**ESTIMATED COST PER
SMALL SCHOOL**



COMMONWEALTH OF PUERTO RICO DEPARTMENT OF EDUCATION
Request for Proposal for E-Rate FY2012 Internal Connections
RFP No: SF (OC) 2011-017

DATE: 03/09/2012
QUOTE: DOE-ERATE
CUSTOMER #: DOE

ESTIMATED PRICE PER SMALL SCHOOL						
Equipment	Manufacturer	Part No.	Description	Qty	Unit Price	Extended Price
ELEGIBLE PRODUCTS						
Category 6 Cabling Drop	Siemon Company	9C6R4E2-06-RXA MX6-F02VP MX-FP-S-02-02 MX-SM2-02 MC6-05-06B MC6-10-06B	Category 6 UTP, 4-pair solid conductor cable; Labelled and Certified to EIA/TIA Standards; 5' Category 6 RJ45-RJ45 Hi-Flex Stranded Patch cables from Patch Panel to Switch; 10' Category 6 RJ45-RJ45 Hi-Flex Stranded Patch cables from wall plate to network device; Wall Plate or surface mount outlet; Category 6 RJ45 Jack Insert. Conduits and Plastic Raceways will be billed separately based on necessity and the price included in the options sheet.	20	\$ 115.00	\$ 2,300.00
Concentrator Box	Great Lakes	GL36WM	36" Wall-mount Cabinet w/ grounding bar and 6 AWG green conductor cable to building ground.	2	\$ 720.00	\$ 1,440.00
Patch Panel	Siemon Company	HD6-24	Category 6 24 Port Patch Panel	2	\$ 115.00	\$ 230.00
Wire Mgmt. Panel	Siemon Company	RS3-RWM-2	Horizontal Wire Management Panel	2	\$ 50.00	\$ 100.00
Switches	Dell	PowerConnect 6248P	Dell™ PowerConnect™ 6248 48 10/100/1000BASE-T auto-sensing Gigabit Ethernet switching ports Power over Ethernet: Up to 15.4 watts per port (External power supply (EPS-470) to supply a full 15.4 watt on all 48 ports.) 4 SFP combo ports for fiber media support 10 Gigabit Ethernet uplink modules (optional) 48Gbps Stacking module (optional) Auto-negotiation for speed, duplex mode and flow control Auto MDI/MDIX Port mirroring Flow-based port mirroring Broadcast storm control sFlow iSCSI Auto Configuration	2	\$ 1,195.00	\$ 2,390.00
UPS	Tripplite	SMART3000RML2U	Tripplite SmartPro 3kVA Line Interactive Sine Wave UPS, 2880 watts, 2U Rack, USB, Serial, EPO, 120V	2	\$ 790.00	\$ 1,580.00
Elegible Products Total:						\$8,040.00
INELEGIBLE PRODUCTS						
Management Module	Tripplite	SNMPWEBCARD	SNMPWEBCARD for UPS Remote Monitoring & Control	2	\$ 165.00	\$ 330.00
Ineligible Products Total:						\$330.00

SHIPMENT: ITEMS INCLUDE SHIPPING, DELIVERY & INSTALLATION
WARRANTY: CABLING MATERIAL 20YRS, ALL OTHER 3 YRS ONSITE
PLEASE REFER ALL INQUIRIES TO JOSÉ AQUINO AT 787-772-6368

**ESTIMATED COST PER
MEDIUM SCHOOL**



COMMONWEALTH OF PUERTO RICO DEPARTMENT OF EDUCATION
Request for Proposal for E-Rate FY2012 Internal Connections
RFP No: SF (OC) 2011-017

DATE: 03/09/2012
QUOTE: DOE-ERATE
CUSTOMER #: DOE

ESTIMATED PRICE PER MEDIUM SCHOOL						
Equipment	Manufacturer	Part No.	Description	Qty	Unit Price	Extended Price
ELEGIBLE PRODUCTS						
Category 6 Cabling Drop	Siemon Company	9C6R4E2-06-RXA MX6-F02VP MX-FP-S-02-02 MX-SM2-02 MC6-05-06B MC6-10-06B	Category 6 UTP, 4-pair solid conductor cable; Labeled and Certified to EIA/TIA Standards; 5' Category 6 RJ45-RJ45 Hi-Flex Stranded Patch cables from Patch Panel to Switch; 10' Category 6 RJ45-RJ45 Hi-Flex Stranded Patch cables from wall plate to network device; Wall Plate or surface mount outlet; Category 6 RJ45 Jack Insert. Conduits and Plastic Raceways will be billed separately based on necessity and the price included in the options sheet.	50	\$ 115.00	\$ 5,750.00
Concentrator Box	Great Lakes	GL36WM	36" Wall-mount Cabinet w/ grounding bar and 6 AWG green conductor cable to building ground.	5	\$ 720.00	\$ 3,600.00
Patch Panel	Siemon Company	HD6-24	Category 6 24 Port Patch Panel	5	\$ 115.00	\$ 575.00
Wire Mgmt. Panel	Siemon Company	RS3-RWM-2	Horizontal Wire Management Panel	5	\$ 50.00	\$ 250.00
Switches	Dell	PowerConnect 6248P	Dell™ PowerConnect™ 6248 48 10/100/1000BASE-T auto-sensing Gigabit Ethernet switching ports Power over Ethernet: Up to 15.4 watts per port (External power supply (EPS-470) to supply a full 15.4 watt on all 48 ports.) 4 SFP combo ports for fiber media support 10 Gigabit Ethernet uplink modules (optional) 48Gbps Stacking module (optional) Auto-negotiation for speed, duplex mode and flow control Auto MDI/MDIX Port mirroring Flow-based port mirroring Broadcast storm control sFlow iSCSI Auto Configuration	5	\$ 1,195.00	\$ 5,975.00
UPS	TrippLite	SMART3000RML2U	TrippLite SmartPro 3kVA Line Interactive Sine Wave UPS, 2880 watts, 2U Rack, USB, Serial, EPO, 120V	5	\$ 790.00	\$ 3,950.00
Elegible Products Total:						\$20,100.00

INELEGIBLE PRODUCTS						
Equipment	Manufacturer	Part No.	Description	Qty	Unit Price	Extended Price
Management Module	TrippLite	SNMPWEBCARD	SNMPWEBCARD for UPS Remote Monitoring & Control	5	\$ 165.00	\$ 825.00
Ineligible Products Total:						\$825.00

SHIPMENT: ITEMS INCLUDE SHIPPING, DELIVERY & INSTALLATION
WARRANTY: CABLING MATERIAL 20YRS, ALL OTHER 3 YRS ONSITE
PLEASE REFER ALL INQUIRIES TO JOSÉ AQUINO AT 787-772-6368

**ESTIMATED COST PER
LARGE SCHOOL**



COMMONWEALTH OF PUERTO RICO DEPARTAMENT OF EDUCATION
Request for Proposal for E-Rate FY2012 Internal Connections
RFP No: SF (OC) 2011-017

DATE: 03/09/2012
QUOTE: DOE-ERATE
CUSTOMER #: DOE

ESTIMATED PRICE PER LARGE SCHOOL						
Equipment	Manufacturer	Part No.	Description	Qty	Unit Price	Extended Price
ELEGIBLE PRODUCTS						
Category 6 Cabling Drop	Siemon Company	9C6R4E2-06-RXA MX6-F02VP MX-FP-S-02-02 MX-SM2-02 MC6-05-06B MC6-10-06B	Category 6 UTP, 4-pair solid conductor cable; Labelled and Certified to EIA/TIA Standards; 5' Category 6 RJ45-RJ45 Hi-Flex Stranded Patch cables from Patch Panel to Switch; 10' Category 6 RJ45-RJ45 Hi-Flex Stranded Patch cables from wall plate to network device; Wall Plate or surface mount outlet; Category 6 RJ45 Jack Insert. Conduits and Plastic Raceways will be billed separately based on necessity and the price included in the options sheet.	115	\$ 115.00	\$ 13,225.00
Concentrator Box	Great Lakes	GL36WM	36" Wall-mount Cabinet w/ grounding bar and 6 AWG green conductor cable to building ground.	20	\$ 720.00	\$ 14,400.00
Patch Panel	Siemon Company	HD6-24	Category 6 24 Port Patch Panel	20	\$ 115.00	\$ 2,300.00
Wire Mgmt. Panel	Siemon Company	RS3-RWM-2	Horizontal Wire Management Panel	20	\$ 50.00	\$ 1,000.00
Switches	Dell	PowerConnect 6248P	Dell™ PowerConnect™ 6248 48 10/100/1000BASE-T auto-sensing Gigabit Ethernet switching ports Power over Ethernet: Up to 15.4 watts per port (External power supply (EPS-470) to supply a full 15.4 watt on all 48 ports.) 4 SFP combo ports for fiber media support 10 Gigabit Ethernet uplink modules (optional) 48Gbps Stacking module (optional) Auto-negotiation for speed, duplex mode and flow control Auto MDI/MDIX Port mirroring Flow-based port mirroring Broadcast storm control sFlow iSCSI Auto Configuration	20	\$ 1,195.00	\$ 23,900.00
UPS	Tripplite	SMART3000RML2U	Tripplite SmartPro 3kVA Line Interactive Sine Wave UPS, 2880 watts, 2U Rack, USB, Serial, EPO, 120V	20	\$ 790.00	\$ 15,800.00
Elegible Products Total:						\$70,625.00
INELEGIBLE PRODUCTS						
Management Module	Tripplite	SNMPWEBCARD	SNMPWEBCARD for UPS Remote Monitoring & Control	20	\$ 165.00	\$ 3,300.00
Ineligible Products Total:						\$3,300.00

SHIPMENT: ITEMS INCLUDE SHIPPING, DELIVERY & INSTALLATION
WARRANTY: CABLING MATERIAL 20YRS, ALL OTHER 3 YRS ONSITE
PLEASE REFER ALL INQUIRIES TO JOSÉ AQUINO AT 787-772-6368

**ESTIMATED COST FOR
ALL SMALL SCHOOL**



COMMONWEALTH OF PUERTO RICO DEPARTAMENT OF EDUCATION
Request for Proposal for E-Rate FY2012 Internal Connections
RFP No: SF (OC) 2011-017

DATE: 03/09/2012
QUOTE: DOE-ERATE
CUSTOMER #: DOE

ESTIMATED PRICE FOR ALL SMALL SCHOOLS = 250

Equipment	Manufacturer	Part No.	Description	Qty	Unit Price	Extended Price
ELEGIBLE PRODUCTS						
Category 6 Cabling Drop	Siemon Company	9C6R4E2-06-RXA MX6-F02VP MX-FP-S-02-02 MX-SM2-02 MC6-05-06B MC6-10-06B	Category 6 UTP, 4-pair solid conductor cable; Labelled and Certified to EIA/TIA Standards; 5' Category 6 RJ45-RJ45 Hi-Flex Stranded Patch cables from Patch Panel to Switch; 10' Category 6 RJ45-RJ45 Hi-Flex Stranded Patch cables from wall plate to network device; Wall Plate or surface mount outlet; Category 6 RJ45 Jack Insert. Conduits and Plastic Raceways will be billed separately based on necessity and the price included in the options sheet.	5,000	\$ 115.00	\$ 575,000.00
Concentrator Box	Great Lakes	GL36WVM	36" Wall-mount Cabinet w/ grounding bar and 6 AWG green conductor cable to building ground.	500	\$ 720.00	\$ 360,000.00
Patch Panel	Siemon Company	HD6-24	Category 6 24 Port Patch Panel	500	\$ 115.00	\$ 57,500.00
Wire Mgmt. Panel	Siemon Company	RS3-RWM-2	Horizontal Wire Management Panel	500	\$ 50.00	\$ 25,000.00
Switches	Dell	PowerConnect 6248P	Dell™ PowerConnect™ 6248 48 10/100/1000BASE-T auto-sensing Gigabit Ethernet switching ports Power over Ethernet: Up to 15.4 watts per port (External power supply (EPS-470) to supply a full 15.4 watt on all 48 ports.) 4 SFP combo ports for fiber media support 10 Gigabit Ethernet uplink modules (optional) 48Gbps Stacking module (optional) Auto-negotiation for speed, duplex mode and flow control Auto MDI/MDIX Port mirroring Flow-based port mirroring Broadcast storm control sFlow iSCSI Auto Configuration	500	\$ 1,195.00	\$ 597,500.00
UPS	Triplite	SMART3000RML2U	Triplite SmartPro 3kVA Line Interactive Sine Wave UPS, 2880 watts, 2U Rack, USB, Serial, EPO, 120V	500	\$ 790.00	\$ 395,000.00
Elegible Products Total:						\$2,010,000.00

INELEGIBLE PRODUCTS						
Management Module	Triplite	SNMPWEBCARD	SNMPWEBCARD for UPS Remote Monitoring & Control	500	\$ 165.00	\$ 82,500.00
Ineligible Products Total:						\$82,500.00

SHIPMENT: ITEMS INCLUDE SHIPPING, DELIVERY & INSTALLATION
WARRANTY: CABLING MATERIAL 20YRS, ALL OTHER 3 YRS ONSITE
PLEASE REFER ALL INQUIRIES TO JOSÉ AQUINO AT 787-772-6368

**ESTIMATED COST FOR
ALL MEDIUM SCHOOL**



COMMONWEALTH OF PUERTO RICO DEPARTMENT OF EDUCATION
Request for Proposal for E-Rate FY2012 Internal Connections
RFP No: SF (OC) 2011-017

DATE: 03/09/2012
QUOTE: DOE-ERATE
CUSTOMER #: DOE

ESTIMATED PRICE FOR ALL MEDIUM SCHOOLS = 750

Equipment	Manufacturer	Part No.	Description	Qty	Unit Price	Extended Price
ELEGIBLE PRODUCTS						
Category 6 Cabling Drop	Siemon Company	9C6R4E2-06-RXA MX6-F02VP MX-FP-S-02-02 MX-SM2-02 MC6-05-06B MC6-10-06B	Category 6 UTP, 4-pair solid conductor cable; Labelled and Certified to EIA/TIA Standards; 5' Category 6 RJ45-RJ45 Hi-Flex Stranded Patch cables from Patch Panel to Switch; 10' Category 6 RJ45-RJ45 Hi-Flex Stranded Patch cables from wall plate to network device; Wall Plate or surface mount outlet; Category 6 RJ45 Jack Insert. Conduits and Plastic Raceways will be billed separately based on necessity and the price included in the options sheet.	37,500	\$ 115.00	\$ 4,312,500.00
Concentrator Box	Great Lakes	GL36WM	36" Wall-mount Cabinet w/ grounding bar and 6 AWG green conductor cable to building ground.	3750	\$ 720.00	\$ 2,700,000.00
Patch Panel	Siemon Company	HD6-24	Category 6 24 Port Patch Panel	3750	\$ 115.00	\$ 431,250.00
Wire Mgmt. Panel	Siemon Company	RS3-RWM-2	Horizontal Wire Management Panel	3750	\$ 50.00	\$ 187,500.00
Switches	Dell	PowerConnect 6248P	Dell™ PowerConnect™ 6248 48 10/100/1000BASE-T auto-sensing Gigabit Ethernet switching ports Power over Ethernet: Up to 15.4 watts per port (External power supply (EPS-470) to supply a full 15.4 watt on all 48 ports.) 4 SFP combo ports for fiber media support 10 Gigabit Ethernet uplink modules (optional) 48Gbps Stacking module (optional) Auto-negotiation for speed, duplex mode and flow control Auto MDI/MDIX Port mirroring Flow-based port mirroring Broadcast storm control sFlow iSCSI Auto Configuration	3750	\$ 1,195.00	\$ 4,481,250.00
UPS	Triplite	SMART3000RML2U	Triplite SmartPro 3kVA Line Interactive Sine Wave UPS, 2880 watts, 2U Rack, USB, Serial, EPO, 120V	3750	\$ 790.00	\$ 2,962,500.00
Elegible Products Total:						\$15,075,000.00

INELEGIBLE PRODUCTS						
Management Module	Triplite	SNMPWEBCARD	SNMPWEBCARD for UPS Remote Monitoring & Control	3750	\$ 165.00	\$ 618,750.00
Ineligible Products Total:						\$618,750.00

SHIPMENT: ITEMS INCLUDE SHIPPING, DELIVERY & INSTALLATION
WARRANTY: CABLING MATERIAL 20YRS, ALL OTHER 3 YRS ONSITE
PLEASE REFER ALL INQUIRIES TO JOSÉ AQUINO AT 787-772-6368

**ESTIMATED COST FOR
ALL LARGE SCHOOL**



COMMONWEALTH OF PUERTO RICO DEPARTMENT OF EDUCATION
Request for Proposal for E-Rate FY2012 Internal Connections
RFP No: SF (OC) 2011-017

DATE: 03/09/2012
QUOTE: DOE-ERATE
CUSTOMER #: DOE

ESTIMATED PRICE FOR ALL LARGE SCHOOLS = 500

Equipment	Manufacturer	Part No.	Description	Qty	Unit Price	Extended Price
ELEGIBLE PRODUCTS						
Category 6 Cabling Drop	Siemon Company	9C6R4E2-06-RXA MX6-F02VP MX-FP-S-02-02 MX-SM2-02 MC6-05-06B MC6-10-06B	Category 6 UTP, 4-pair solid conductor cable; Labelled and Certified to EIA/TIA Standards; 5' Category 6 RJ45-RJ45 Hi-Flex Stranded Patch cables from Patch Panel to Switch; 10' Category 6 RJ45-RJ45 Hi-Flex Stranded Patch cables from wall plate to network device; Wall Plate or surface mount outlet; Category 6 RJ45 Jack Insert. Conduits and Plastic Raceways will be billed separately based on necessity and the price included in the options sheet.	57,500	\$ 115.00	\$ 6,612,500.00
Concentrator Box	Great Lakes	GL36WMM	36" Wall-mount Cabinet w/ grounding bar and 6 AWG green conductor cable to building ground.	10000	\$ 720.00	\$ 7,200,000.00
Patch Panel	Siemon Company	HD6-24	Category 6 24 Port Patch Panel	10000	\$ 115.00	\$ 1,150,000.00
Wire Mgmt. Panel	Siemon Company	RS3-RWM-2	Horizontal Wire Management Panel	10000	\$ 50.00	\$ 500,000.00
Switches	Dell	PowerConnect 6248P	Dell™ PowerConnect™ 6248 48 10/100/1000BASE-T auto-sensing Gigabit Ethernet switching ports Power over Ethernet: Up to 15.4 watts per port (External power supply (EPS-470) to supply a full 15.4 watt on all 48 ports.) 4 SFP combo ports for fiber media support 10 Gigabit Ethernet uplink modules (optional) 48Gbps Stacking module (optional) Auto-negotiation for speed, duplex mode and flow control Auto MDI/MDIX Port mirroring Flow-based port mirroring Broadcast storm control sFlow iSCSI Auto Configuration	10000	\$ 1,195.00	\$ 11,950,000.00
UPS	Tripplite	SMART3000RML2U	Tripplite SmartPro 3kVA Line Interactive Sine Wave UPS, 2880 watts, 2U Rack, USB, Serial, EPO, 120V	10000	\$ 790.00	\$ 7,900,000.00
Elegible Products Total:						\$35,312,500.00

INELEGIBLE PRODUCTS						
Management Module	Tripplite	SNMPWEBCARD	SNMPWEBCARD for UPS Remote Monitoring & Control	10000	\$ 165.00	\$ 1,650,000.00
Ineligible Products Total:						\$1,650,000.00

SHIPMENT: ITEMS INCLUDE SHIPPING, DELIVERY & INSTALLATION
WARRANTY: CABLING MATERIAL 20YRS, ALL OTHER 3 YRS ONSITE
PLEASE REFER ALL INQUIRIES TO JOSÉ AQUINO AT 787-772-6368

**DOE CENTRAL OFFICE
AND TERMINAL SERVERS**



COMMONWEALTH OF PUERTO RICO DEPARTMENT OF EDUCATION
Request for Proposal for E-Rate FY2012 Internal Connections
RFP No: SF (OC) 2011-017

DATE: 03/09/2012
QUOTE: DOE-ERATE
CUSTOMER #: DOE

DOE CENTRAL OFFICE						
Equipment	Manufacturer	Part No.	Description	Qty	Unit Price	Extended Price
ELEGIBLE PRODUCTS						
Switches	Dell	PowerConnect 6248P	Dell™ PowerConnect™ 6248 48 10/100/1000BASE-T auto-sensing Gigabit Ethernet switching ports Power over Ethernet: Up to 15.4 watts per port (External power supply (EPS-470) to supply a full 15.4 watt on all 48 ports.) 4 SFP combo ports for fiber media support 10 Gigabit Ethernet uplink modules (optional) 48Gbps Stacking module (optional) Auto-negotiation for speed, duplex mode and flow control Auto MDI/MDIX Port mirroring Flow-based port mirroring Broadcast storm control sFlow iSCSI Auto Configuration	150	\$1,195.00	\$179,250.00
GBIC	Dell	GESFP	Gigabit Ethernet SFP, LC connector, SX transceiver	300	\$50.00	\$15,000.00
Fiber Optic Patch Cord	Siemon Company	LC-LC PATCH CORD	Fiber Optic Patch Cord LC-LC Multimode	300	\$60.00	\$18,000.00
Access Point	Cisco Systems	AIR-AP1041N-A-K9	Cisco Aironet 1041-N Series Access Point Enterprise-class, 802.11n access point designed to address enterprise wireless connectivity needs.	10	\$335.00	\$3,350.00
UPS	Tripplite	SMART3000RML2U	Tripplite SmartPro 3kVA Line Interactive Sine Wave UPS, 2880 watts, w/ 2U Rack, USB, Serial, EPO, 120V	20	\$790.00	\$15,800.00
	SESCO		DOE Central office hardware and equipment includes installation and configuration services as per installation requirements in Section 6.2	1	\$10,000.00	Included
Elegible Products Total:						\$52,150.00
INELEGIBLE PRODUCTS						
Management Module	Tripplite	SNMPWEBCARD	SNMPWEBCARD for UPS Remote Monitoring & Control	20	\$165.00	\$3,300.00
Ineligible Products Total:						\$3,300.00
Terminal Servers						
Server	Dell Computers	PET110	PowerEdge T110 II Chassis with Cabled 3.5 Hard Drives 8GB Memory 1333MHz Single Ranked UDIMM Intel Pentium G620 2.60 GHz, Dual Core (65W) (2) 500GB 7.2k RPM Serial ATA 3Gbps 3.5-in Cabled Hard Drive 16X DVD-ROM, SATA, INTERNAL PERC S100 supporting 2 Hard Drives - RAID 1	750	\$995.00	\$746,250.00
	SESCO		Installation and Configuration services as per installation requirements in Section 6.2	750	\$150.00	\$112,500.00
Elegible Products Total:						\$858,750.00

SHIPMENT: ITEMS INCLUDE SHIPPING, DELIVERY & INSTALLATION
WARRANTY: CABLING MATERIAL 20YRS, ALL OTHER 3 YRS ONSITE
PLEASE REFER ALL INQUIRIES TO JOSÉ AQUINO AT 787-772-6368

OPTIONS



COMMONWEALTH OF PUERTO RICO DEPARTMENT OF EDUCATION
Request for Proposal for E-Rate FY2012 Internal Connections
RFP No: SF (OC) 2011-017

DATE: 03/09/2012
QUOTE: DOE-ERATE
CUSTOMER #: DOE

Qty	Description	Unit Price	Total Price
1	EMT Conduit ¾ (per ft.)	\$ 2.50	\$ 2.50
1	EMT Conduit 1" (per ft.)	\$ 3.50	\$ 3.50
1	EMT Conduit 2" (per ft.)	\$ 5.50	\$ 5.50
1	PVC Flexible Conduit ¾ (per ft.)	\$ 1.50	\$ 1.50
1	PVC Flexible Conduit 1" (per ft.)	\$ 2.50	\$ 2.50
1	PVC Flexible Conduit 2" (per ft.)	\$ 4.50	\$ 4.50
1	PVC Conduit ¾ (per ft.)	\$ 2.00	\$ 2.00
1	PVC Conduit 1" (per ft.)	\$ 3.00	\$ 3.00
1	PVC Conduit 2" (per ft.)	\$ 4.50	\$ 4.50
1	PVC Conduit 4" (per ft.)	\$ 8.50	\$ 8.50
1	Cat6 Patch Cable 3'	\$ 5.00	\$ 5.00
1	Cat6 Patch Cable 5'	\$ 7.50	\$ 7.50
1	Cat6 Patch Cable 10'	\$ 10.00	\$ 10.00
1	7' Open Rack	\$ 250.00	\$ 250.00
1	Rack Vertical Organizer 4"	\$ 490.00	\$ 490.00
1	Rack Horizontal Organizer Fron and Rear 2U	\$ 90.00	\$ 90.00
1	Flex trail 12"W (ft)	\$ 20.00	\$ 20.00
1	J-hooks	\$ 2.00	\$ 2.00
1	Category 6 Plenum UTP, 4-pair solid conductor cable; Labelled and Certified to EIA/TIA Standards; 5' Category 6 RJ45-RJ45 Hi-Flex Stranded Patch cables from Patch Panel to Switch; 10' Category 6 RJ45-RJ45 Hi-Flex Stranded Patch cables from wall plate to network device; Wall Plate or surface mount outlet; Category 6 RJ45 Jack Insert.	\$ 165.00	\$ 165.00
1	1-3 cables plastic raceway (ft)	\$ 2.00	\$ 2.00
1	4-5 cables plastic raceway (ft)	\$ 3.00	\$ 3.00
1	6-10 cables plastic raceway (ft)	\$ 4.00	\$ 4.00
1	11-20 cables plastic raceway (ft)	\$ 8.00	\$ 8.00
1	21-40 cables plastic raceway (ft)	\$ 12.00	\$ 12.00
1	Outdoor Cat6 UTP Backbone (ft)	\$ 0.85	\$ 0.85
1	Indoor Cat6 UTP Backbone (ft)	\$ 0.75	\$ 0.75
1	Outdoor 62.5um Multimode 6 strand fiber optic cable (ft)	\$ 2.75	\$ 2.75
1	Indoor 62.5um Multimode 6 strand fiber optic cable (ft)	\$ 2.25	\$ 2.25
1	Outdoor 50um Multimode 6 strand fiber optic cable (ft)	\$ 3.00	\$ 3.00
1	Indoor 50um Multimode 6 strand fiber optic cable (ft)	\$ 2.50	\$ 2.50
1	Outdoor Singlemode 6 strand fiber optic cable (ft)	\$ 3.75	\$ 3.75
1	Indoor Singlemode 6 strand fiber optic cable (ft)	\$ 3.25	\$ 3.25
1	Fiber Optic Cable LC or SC Termination Connector	\$ 8.00	\$ 8.00
1	Fiber Rackmount Patch Panel	\$ 300.00	\$ 300.00
1	6 Fiber Adapter Panel	\$ 60.00	\$ 60.00
1	12 Fiber Adapter Panel	\$ 80.00	\$ 80.00
1	Fiber Adapter Blank Panel	\$ 15.00	\$ 15.00
1	Fiber Patch Cord,MM Duplex	\$ 55.00	\$ 55.00
1	Fiber Patch Cord,SM Duplex	\$ 65.00	\$ 65.00
1	120VAC 12 AWG Electrical Circuit Installation (ft)	\$ 20.00	\$ 20.00
1	Concentrator Box Cooling Fan	\$ 275.00	\$ 275.00
1	Gigabit Ethernet SFP, LC connector, LH transceiver	\$ 500.00	\$ 500.00
1	Gigabit Ethernet SFP, RJ-45 connector, 1000BASE-T transceiver	\$ 375.00	\$ 375.00
1	Switch Stacking Module w/ Stacking Cable	\$ 350.00	\$ 350.00
1	DELL 18"Flat Display Monitor	\$ 145.00	\$ 145.00
1	Dell™ PowerConnect™ 6224P - 24 10/100/1000BASE-T auto-sensing Gigabit Ethernet switching ports w/ POE	\$ 800.00	\$ 800.00

SHIPMENT: ITEMS INCLUDE SHIPPING, DELIVERY & INSTALLATION
WARRANTY: CABLING MATERIAL 20YRS, ALL OTHER 3 YRS ONSITE
PLEASE REFER ALL INQUIRIES TO JOSÉ AQUINO AT 787-772-6368

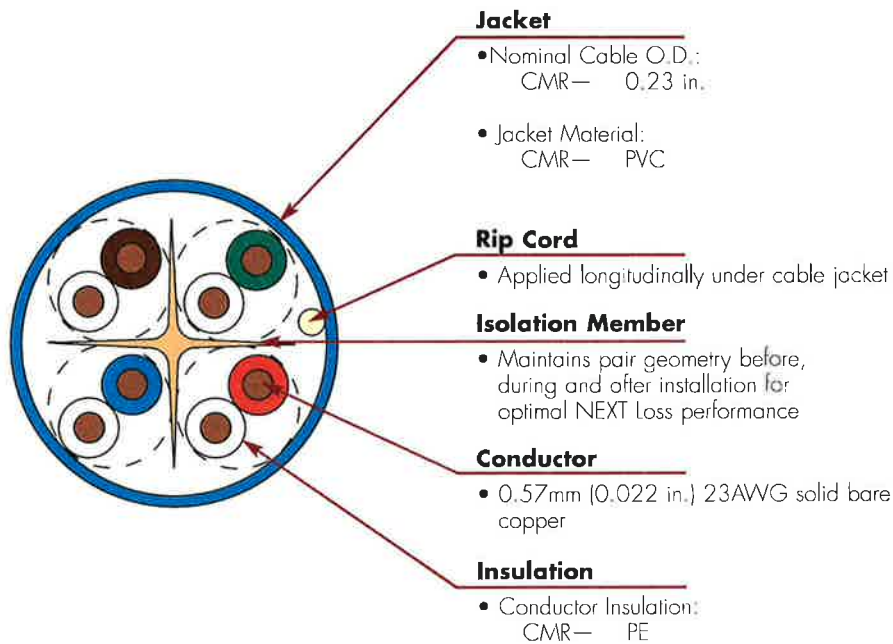
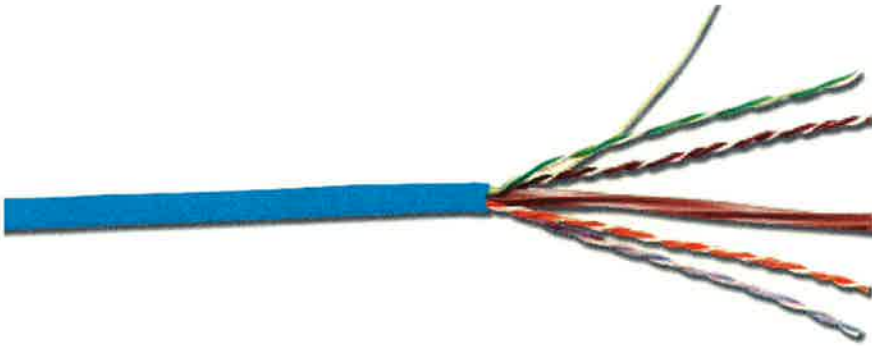
**TECHNNICAL
LITERATURE**

SOLUTION 6™ UTP CABLE — RISER (US)

Solution 6 cable meets or exceeds all TIA/EIA and ISO/IEC category 6 transmission performance specifications. Combine our high performance category 6 connectivity with Solution 6 cable and the result is a system with excellent electrical performance for optimum applications support.



CABLE — US



HIGHLIGHTS

- Reverse sequential numbering
- Round jacket
- Center isolation member
- Jacket material is lead free

PACKAGING

- 1000 ft. reel
- Weight — 23 lbs/1000 ft.

STANDARDS COMPLIANCE

- ISO/IEC 11801:2002 (Category 6)
- TIA/EIA-568-C.2
- UL CMR and CSA FT4
- RoHS Compliant

ETHERNET APPLICATIONS SUPPORT

- 1000BASE-T
- 100BASE-T
- 10BASE-T

Supports any application designed for category 6 or lower cabling

Solution 6 Riser 4-Pair UTP Cable (CMR, CSA Type FT4):

9C6R4-E2-(XX)-RXA.....Riser, 1000 ft. Reel

Use (XX) to specify jacket color: **02 = white**, **03 = red**, **04 = gray**, **05 = yellow**, **06 = blue**, **07 = green**

Cable colors highlighted in red in 1000 ft. package indicate products which are readily available. Other colors may have extended lead times and minimum purchase requirements.

CONNECTING THE WORLD TO A HIGHER STANDARD

WWW.SIEMON.COM



PRODUCT INFORMATION

CABLE — US

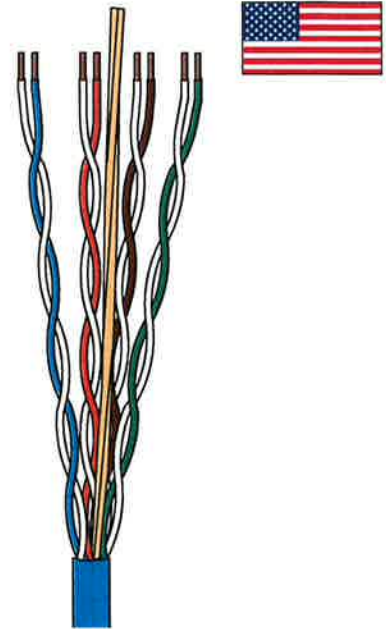
Solution 6 UTP Cable

ELECTRICAL SPECIFICATIONS

DC Resistance	<9.38 /100m
DC Resistance Unbalance	5%
Mutual Capacitance	5.6 nF/100m
Capacitance Unbalance	<330 pF/100m
Characteristic Impedance (ohms)	1-100 MHz: 100 ± 15% 100 - 520 MHz: 100 ± 22%
NVP	CMR— 68%
LCL	30-10log(f/100)dB
Delay Skew	≤ 45ns

PHYSICAL PROPERTIES

	CMR
Pulling Tension (max)	110N (25 lbf)
Bend Radius (min)	25mm (1 in.)
Installation Temperature	-36 to 60°C (-32 to 140°F)
Storage Temperature	-34 to 75°C (-30 to 167°F)
Operating Temperature	-34 to 60°C (-30 to 140°F)



TRANSMISSION PERFORMANCE

Guaranteed Worst Case:
Based on category 6 requirements from TIA/EIA-568-C.2

Siemon Typical:
Based on worst case test data from a randomly selected cable sample

Frequency (MHz)	Insertion Loss (dB/100m)		NEXT (dB)		PS NEXT (dB)		ACR-N (dB)		PS ACR-N (dB)		ACR-F (dB)		PS ACR-F (dB)		Return Loss (dB)		Propagation Delay (ns)	
	Guaranteed Worst Case	Siemon Typical	Guaranteed Worst Case	Siemon Typical	Guaranteed Worst Case	Siemon Typical	Guaranteed Worst Case	Siemon Typical	Guaranteed Worst Case	Siemon Typical	Guaranteed Worst Case	Siemon Typical	Guaranteed Worst Case	Siemon Typical	Guaranteed Worst Case	Siemon Typical	Guaranteed Worst Case	Siemon Typical
1	2.0	1.7	74.3	95.3	72.3	92.9	72.3	93.6	70.3	91.2	67.8	92.0	64.8	89.1	20.0	26.0	570	520
4	3.8	3.4	65.3	83.0	63.3	81.5	61.5	79.6	59.5	78.1	55.8	80.8	52.8	77.6	23.0	31.9	552	517
10	6.0	5.3	59.3	78.5	57.3	75.8	53.3	73.2	51.3	70.4	47.8	73.8	44.8	70.7	25.0	33.8	545	513
16	7.6	6.8	56.2	74.1	54.2	73.0	48.7	67.2	46.7	66.2	43.7	69.3	40.7	66.3	25.0	36.5	543	511
20	8.5	7.6	54.8	74.4	52.8	72.4	46.3	66.7	44.3	64.8	41.8	66.8	38.8	64.0	25.0	31.5	542	511
31.25	10.7	9.6	51.9	70.7	49.9	69.1	41.2	61.1	39.2	59.5	37.9	62.0	34.9	59.5	23.6	32.6	540	510
62.5	15.4	13.8	47.4	62.6	45.4	61.6	32.0	48.8	30.0	47.8	31.9	56.8	28.9	52.9	21.5	31.7	539	508
100	19.8	17.7	44.3	62.9	42.3	60.8	24.5	45.2	22.5	43.1	27.8	49.2	24.8	48.4	20.1	31.2	538	508
160	25.6	22.7	41.2	62.8	39.2	60.1	15.6	40.1	13.6	37.3	23.7	51.9	20.7	49.1	18.7	28.9	537	507
200	29.0	25.4	39.8	59.5	37.8	57.5	10.8	34.1	8.8	32.1	21.8	47.3	18.8	45.3	18.0	28.4	537	507
250	32.8	28.6	38.3	55.0	36.3	52.1	5.5	26.3	3.5	23.5	19.8	39.7	16.8	39.0	17.3	26.5	536	507
300*	-	31.8	-	53.5	-	52.8	-	21.7	-	20.9	-	35.3	-	35.2	-	26.8	-	507
400*	-	37.4	-	56.4	-	54.4	-	19.0	-	17.0	-	39.6	-	38.2	-	28.4	-	506
500*	-	42.0	-	51.3	-	49.4	-	9.3	-	7.4	-	36.7	-	36.1	-	24.8	-	506
550*	-	44.6	-	55.4	-	52.7	-	10.8	-	8.1	-	36.4	-	33.8	-	22.5	-	506

*Performance for frequencies above 250MHz are for information only.
Transmission performance based on 100 meters (328 ft)

Because we continuously improve our products, Siemon reserves the right to change specifications and availability without prior notice.

MAX®, MC®, BladePatch®, HD®, S210® and Solution 6™ are trademarks of Siemon

The Americas
Watertown, CT USA
Phone (1) 860 945 4200

Europe/Middle East/Africa
Surrey, England
Phone (44) 0 1932 571771

Asia/Pacific
Shanghai, P.R. China
Phone (86) 21 5385 0303

Japan
Tokyo, Japan
Phone (03) 5405 7650

For related product information visit the Siemon e-catalog at:
www.siemon.com

WWW.SIEMON.COM



PROD-SS-Solution6CBL_Riser(US) Rev. A 3/10 (US)

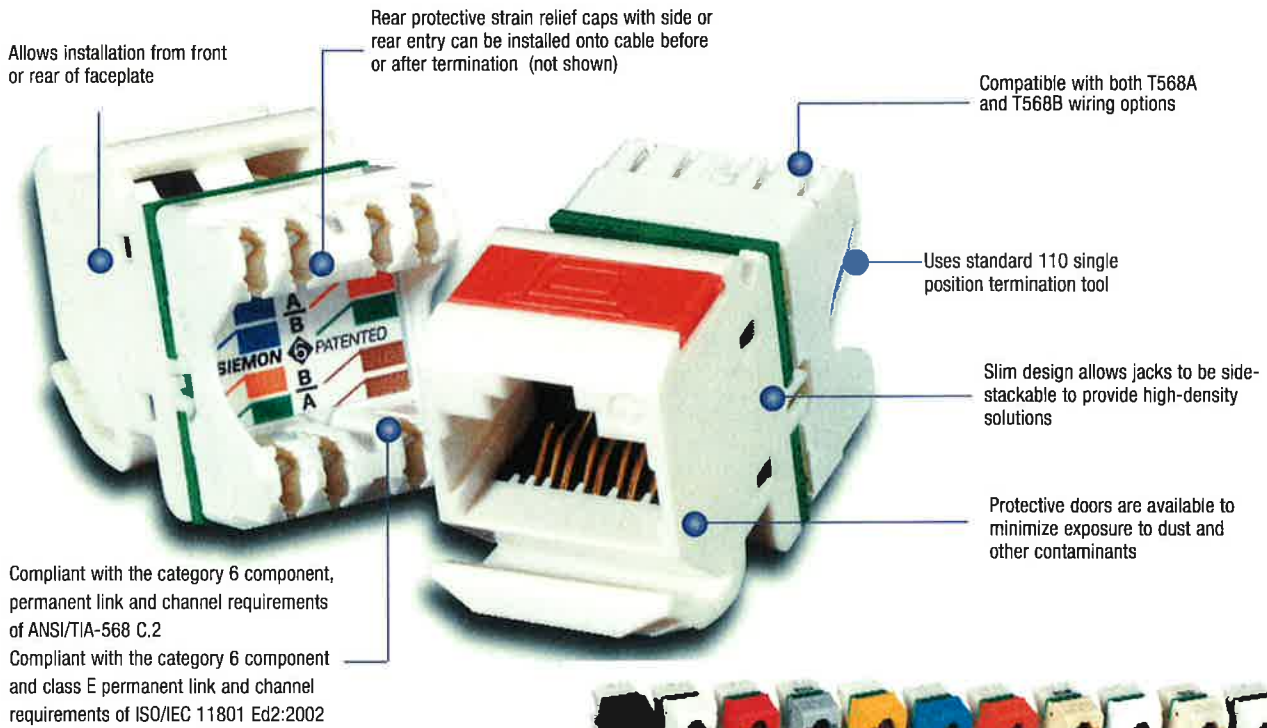
© 2010 siemon

MAX® 6 MODULES

The MAX 6 module provides performance far exceeding category 6 connecting hardware performance specifications. It also insures backwards compatibility with components and systems of lower performing categories.

Installers and end users benefit from other rich features incorporated into the MAX 6 module. It's compact design is ideal for high density applications. Up to six modules can be utilized in a single gang faceplate and twelve modules in double gang faceplate. Also, the angled MAX 6 modules provide a gravity feed, low-profile design for the work area – greatly improving patch cord management in installations where clearance is at a minimum.

The flat MAX 6 modules are just as versatile – perfect for flush mount applications or with MAX series patch panels or surface mount (SM®) boxes. This solution makes it possible to configure a wide variety of mixed media solutions.



MAX 6 modules are available in many colors, ideal for color-coding

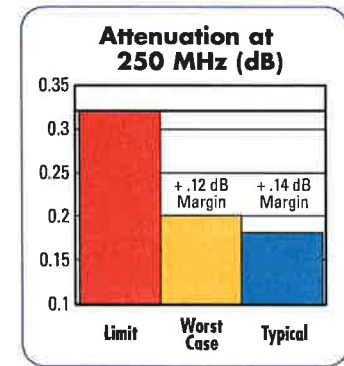
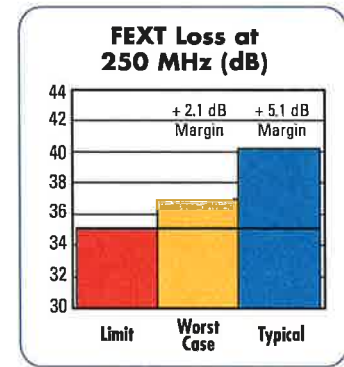
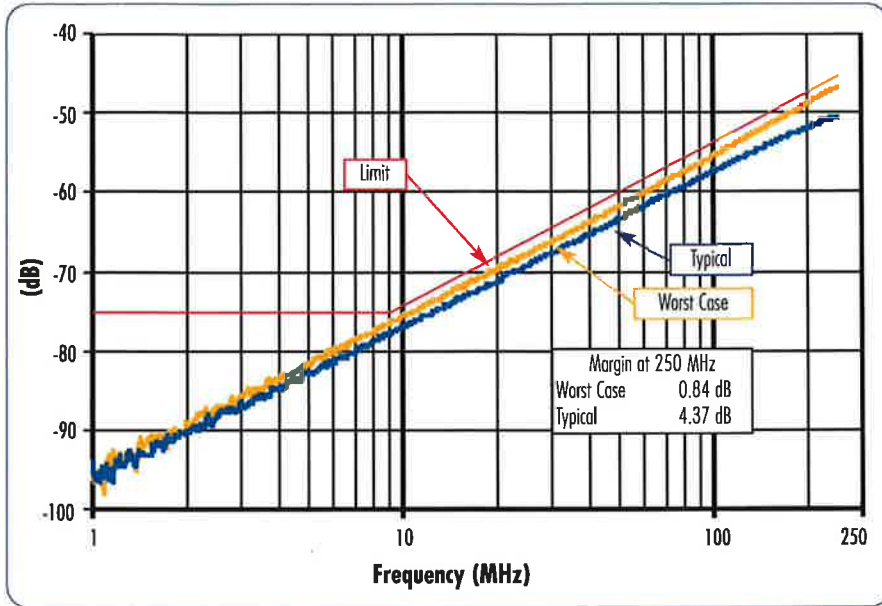


Pyramid™ Wire Entry System on S310® blocks separates paired conductors when lacing cables to simplify and reduce installation time
Siemon's Palm Guard with MAX 6 insert assists in securing module during termination
Use MC 6 modular cords to unlock the performance of Siemon MAX 6 modules

PRODUCT INFORMATION

Test Data:

Near-End Crosstalk Performance:



MAX® 6 Modules:

- MX6-(XX) Angled module with T568A/B wiring, rear strain relief cap and protective color-matching rubber door
- MX6-F(XX) Flat module with T568A/B wiring, rear strain relief cap
- MX6-K(XX) Keystone module with T568A/B wiring and strain relief cap



MX6-(XX)



MX6-F(XX)



MX6-K(XX)

Use (XX) to specify color:

01 = black, 02 = white, 03 = red, 04 = gray, 05 = yellow, 06 = blue, 09 = orange, 20 = ivory, 25 = bright white, 80 = light ivory, 82 = alpine white

Add "-D" for optional color-matching door for flat version

Ⓢ Add "B" to end of part number for bulk project pack of 100 modules

Angled and flat modules include one color-matching, one red, and one blue icon

Door color is clear for angled red, yellow, blue and orange modules, white for flat

Note: Keystone version is designed for integration with various international mounting products and is not compatible with MAX mounting hardware

Because we continuously improve our products, Siemon reserves the right to change specifications and availability without prior notice.

HD®, MC®, MAX® and S310® are trademarks of Siemon

For related product information request Spec Sheet(s):

MAX Series Modular Mounting Frames (PROD-SS-MMT)

MAX Series Modular Faceplates (PROD-SS-MXF)

MAX Series Patch Panels (PROD-SS-MXP)

Termination Tools (PROD-SS-S78)

North America

Watertown, CT USA
Phone (1) 860 945 4200 US
Phone (1) 888 425 6165 Canada

Europe/Middle East/Africa

Surrey, England
Phone (44) 0 1932 571771

Asia/Pacific

Shanghai, P.R. China
Phone (86) 21 5385 0303

Latin America

Bagota, Colombia
Phone (571) 657 1950

MC6 UTP MODULAR CORDS - US

Siemon's category 6 series of modular cords are key components to ensure optimum channel performance of our category 6 UTP systems. A variety of product enhancements contribute to the cord's ground breaking performance – including 250 MHz rated stranded cordage, a patented crosspair isolator and an innovative 360° crimp, which provides excellent plug-to-cable strain relief without causing pair deformation. The cable used to manufacture the category 6 patch cords exceeds the specifications set forth by both ANSI/TIA-568-C.2 and ISO/IEC 11801:2002.



Modular cords feature high performance category 6 cable for optimal flexibility and transmission performance, exceeding category 6 performance specifications

Jacket meets the flame resistance requirements for both CM and LSOH

Boots feature an ultra slim design for high-density patching

Optional color clips can easily be snapped on for additional color coding

Innovative 360° crimp provides excellent plug-to-cable strain relief without causing pair deformation

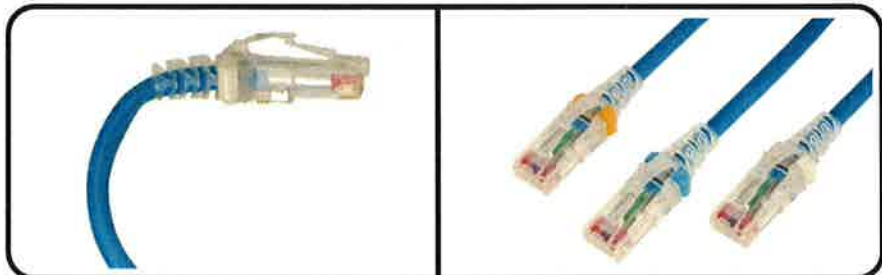
Patented metallic isolator inside plug for consistent, exceptional NEXT performance

Integral latch guard protects plug from snagging when pulling through pathways or cable managers

Internal load bar provides consistent terminations and ideal pair geometry

STANDARDS COMPLIANCE

- ANSI/TIA-568-C.2
- ISO/IEC 11801
- IEEE 802.3af (PoE)
- IEEE 802.3at (PoE+)
- IEC 60603-7
- cUL US Listed
- TIA-968-A (formerly FCC Part 68 Subpart F)



Boot and integrated strain relief ensures proper bend relief, critical for category 6 performance

Optional colored clips enable field color coding and can easily be snapped into place without having to disconnect cords

PRODUCT INFORMATION

Performance Specifications:

ELECTRICAL	
Contact Resistance	20 mΩ
Input to Output DC Resistance	200 mΩ
Min. Dielectric Withstand Voltage (contact to contact)	1000 V DC or AC peak
Insulation Resistance	500 mΩ
Compatibility	Backwards to cat 5e
Current Rating @ 25° C	1.5 A
Power over Ethernet	Suitable for PoE and PoE+
MECHANICAL – GENERAL	
Operating Temperature	-10 to 60 °C, (14 to 140 °F)
Flammability Rating	UL 94 - V0
Green Features	RoHS, lead-free, halogen-free, PVC free
Contact Materials	copper alloy
Plastic Materials	Flame retardant thermoplastic
Marking	P/N, length, performance level, QC
MECHANICAL – PLUG	
Number of Plug Insertion Cycles	750
Min. Plug Retention Force	50N
Plug Compatibility	Compatible with RJ45 outlets

MECHANICAL – CABLE (STRANDED)	
Wire Size Range (nominal)	26 AWG 7x34 Stranded tinned copper
Cable Construction	UTP
Cable O.D. (nominal)	5.3mm (0.20 in.)
Wiring	T568A/B
Jacket Type	CM/LSOH
Bend Radius	25mm (1.0 in.)



MC6 Modular Stranded Category 6 Cords:

MC6-(XX)-(XX).....MC6, double-ended, 4pr stranded modular cord colored jacket with clear boot, T568A/B, CM/LSOH,

Use 1st (XX) to specify cable cord length:

03 = 0.9m (3ft), 05 = 1.5m (5 ft), 07 = 2.1m (7 ft),
10 = 3.1m (10 ft), 15 = 4.6m (15 ft), 20 = 6.1m (20 ft.)

Use 2nd (XX) to specify cable color:

01 = black, 02 = white, 03 = red, 04 = gray, 05 = yellow, 06 = blue, 07 = green, 09 = orange

Ⓢ Add "B" for bulk project pack of 100 modular cords

Custom lengths are available upon request. Contact our Customer Service Department for more information.

Color Coding Clips:

CLIP-(XX)Color coding clip, bag of 25

Use (XX) to specify color: 01=black, 02=white, 03=red, 04=gray, 05=yellow, 06=blue, 07=green, 09 = orange



Because we continuously improve our products, Siemon reserves the right to change specifications and availability without prior notice.

For additional resource information:

Visit our web site at www.siemon.com

The Americas

Watertown, CT USA
Phone (1) 860 945 4200 US
Phone (1) 888 425 6165 Canada

Europe/Middle East/Africa

Surrey, England
Phone (44) 0 1932 571771

Asia/Pacific

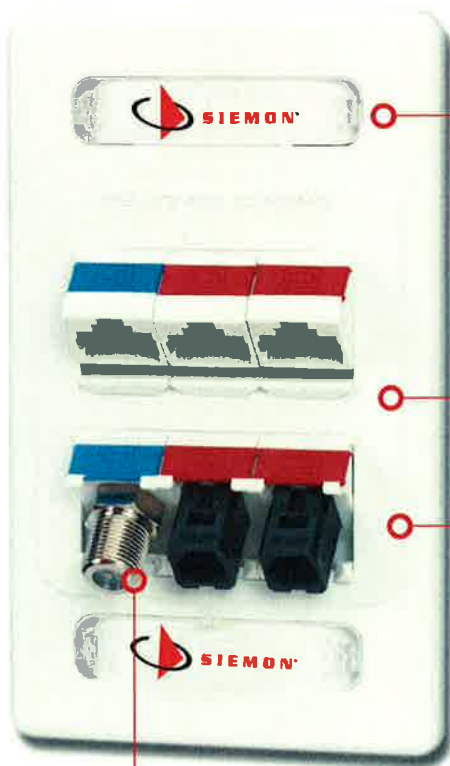
Shanghai, P.R. China
Phone (86) 21 6390 6778

Latin America

Bagota, Colombia
Phone (571) 317 2121

MAX® FACEPLATES - US

The MAX series modular faceplates combine high capacity with aesthetic enhancements that provide a fresh new look to match today's technologies. The faceplate offers pressure-release designation label covers which eliminate the need for a probe-pic or screwdriver when installing faceplate labels. The faceplates are designed to be used with the angled or flat MAX modules. Its durable finish masks minor scuffs that may occur during daily usage. The single gang faceplate can support up to six MAX modules and the double gang can support up to twelve MAX modules.



Sheets of designation labels can be ordered for use with printers

Single and double gang faceplates available

Faceplates available in black, white, bright white, gray, ivory, light ivory, and stainless steel

Complete multimedia support



Flexible mounting tab on MAX modules allows installation from front or rear of faceplate

Fits up to 6 outlets in a single gang or 12 in a double gang faceplate

Faceplates include pressure-release designation label covers for quick, tool-less removal

CONNECTING THE WORLD TO A HIGHER STANDARD

WWW.SIEMON.COM



ORDERING INFORMATION

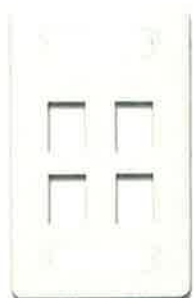
WORK AREA

10G™ MAX® Faceplates:

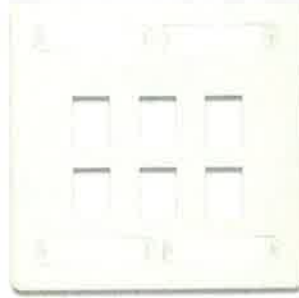
Siemon's 10G MAX faceplates are designed to provide optimal outlet separation to reduce alien crosstalk (ANEXT) between Z-MAX 6A UTP modules. They are also ideal for use with Siemon's screened MAX modules.



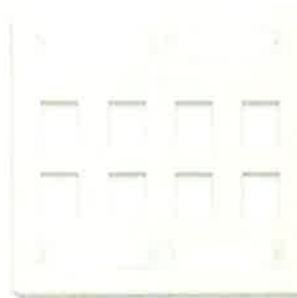
10GMX-FPS02-XX)
Single gang 10G
faceplate for two Z-MAX,
screened MAX, or TERA
outlets



10GMX-FPS04-XX)
Single gang 10G
faceplate for four Z-MAX
screened MAX, or TERA
outlets



10GMX-FPD06-XX)
Double gang 10G faceplate
for six Z-MAX, screened
MAX or TERA outlets



10GMX-FPD08-XX)
Double gang 10G faceplate
for eight Z-MAX, screened
MAX or TERA outlets

MAX Single Gang Faceplates:



MX-FP-S-01-XX)
for one UTP or
Screened MAX, Z-MAX
or TERA® outlet



MX-FP-S-02-XX)
for two UTP MAX,
Z-MAX or TERA
outlets



MX-FP-S-03-XX)
for three UTP MAX,
Z-MAX or TERA
outlets

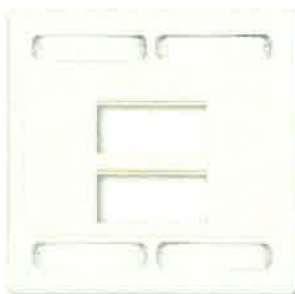


MX-FP-S-04-XX)
for four UTP MAX,
Z-MAX or TERA outlets

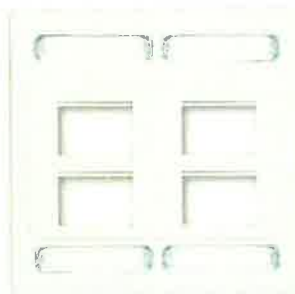


MX-FP-S-06-XX)
for six UTP MAX,
Z-MAX or TERA outlets

MAX Double Gang Faceplates:



MX-FP-D-06-XX)
for six UTP MAX, Z-MAX
or TERA outlets



MX-FP-D-08-XX)
for eight UTP MAX, Z-MAX
or TERA outlets



MX-FP-D-12-XX)
for twelve UTP MAX, Z-MAX
or TERA outlets

Use (XX) to specify color: 01 = black, * 02 = white, 04 = gray*, 20 = ivory, 80 = light ivory

Faceplates include designation labels, clear label cover, and mounting screws

☺ Add "B" to end of part number for bulk project pack of 100 faceplates*

*Black and gray color options and bulk project packs available for single gang faceplates only

ORDERING INFORMATION

MAX® Series Stainless Steel Faceplates:

Single and double gang stainless steel MAX faceplates for use with flat and angled MAX, Z-MAX and TERA outlets. Brushed finish on plates mask minor scratches and scuffs that may occur during day-to-day use.



MX-FP-S(XX)-SSSingle gang stainless steel faceplate
MX-FP-S(XX)-SS-LSingle gang stainless steel faceplate with labels and label holders

Use (XX) to specify number of ports:
01=1-port, 02=2-ports, 03=3-ports, 04=4-ports, 06=6-ports
Faceplate includes mounting screws

MX-FP-D(XX)-SSDouble gang stainless steel faceplate
MX-FP-D(XX)-SS-LDouble gang stainless steel faceplate with labels and label holders

Use (XX) to specify number of ports:
06=6-ports, 08=8-ports, 12=12-ports

MAX Modular Furniture Adapters:

The MAX modular furniture adapter accepts 4 MAX, Z-MAX or TERA modules and snap directly into communication outlet openings* in most major modular furniture systems, including Steelcase, Hon Industries, Haworth, Kimball and DRG. Adapters include designation label and clear label cover to allow for circuit identification.

MX-MFP(XX).....Modular furniture adapter for standard openings including steelcase
MX-MFP-KNL(XX)Modular furniture adapter for Knoll Group openings (not available in white or ivory)
MX-MFP-HME(XX)Modular furniture adapter for Herman Miller Ethospace Beltline openings (not available in white or ivory)
MX-MFP-HMA(XX).....Modular furniture adapter for Herman Miller Action Office Series 2 and Ethospace base openings
MX-MFP-AO3(XX)Modular furniture adapter for Herman Miller Action Office Series 3 base opening

Use (XX) to specify color: 01 = black, 02 = white, 04 = gray, 20 = ivory, 80 = light ivory

Note: For Herman Miller Action Office Series 3 152mm (6 in.) vertical panel, use our MX-FP-S(XX)-(XX) to mount up to six MAX modules.

*Furniture outlet openings, panel thickness, and raceway clearance may vary.
Please consult furniture manufacturer for actual dimensions to determine compatibility.



MAX Modular Furniture adapters mount into modular furniture openings, providing superior density with proper circuit designation.

Tamper-Proof MAX Faceplate:

Siemon's tamper-proof MAX faceplates provide a secure, low profile solution for mounting our complete line of MAX modules. The design features a one-piece base which accepts up to six angled MAX modules* and is secured by a solid cover and a choice of tamper-proof star or standard slotted head screw. The base mounts to any single gang outlet (including Siemon's fiber outlet box).

MX-TFP-S-06(XX).....Single gang, tamper-proof faceplate for six angled MAX modules

Use (XX) to specify color: 01 = black, 02=white, 04=gray, 20 = ivory, 25 = bright white, 80=light ivory

Faceplate includes mounting screws

* Not compatible with Z-MAX outlets



Wall Phone Faceplates:

MX-WP(XX)-SS.....MAX Series Stainless Steel Wall Phone Faceplate with Keystone MAX Module included

WPJPPlastic Wall Phone Faceplate with 4-pair USOC jack included

Use (XX) to specify wiring option:

K6 = Category 6, T568A/B

K5 = Category 5e, T568A/B

KU3 = 3-pair, 6-position USOC

KU4 = 4-pair, 8-position USOC



MX-WP(XX)-SS



WPJP

ORDERING INFORMATION

WORK AREA

MAX® Duplex and Designer® Faceplates:

The MAX Duplex and Designer faceplates are designed for use with Siemon's MAX series mounting frames. They are ideal in today's home office, or residential environment. Faceplates include designation labels and color-matching label covers for circuit identification.



DP-S-(XX)
Single gang, plastic Duplex faceplate, accepts one Duplex Mounting Frame



DR-S-(XX)
Single gang, plastic Designer faceplate, accepts one Designer Mounting Frame



DP-D-(XX)
Double gang, plastic Designer/Duplex faceplate, accepts one Duplex and Designer Mounting Frame

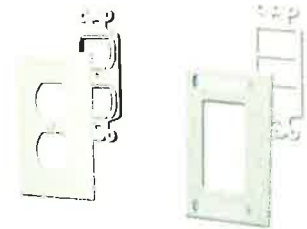


DR-D-(XX)
Double gang, plastic Designer faceplate, accepts two Designer Mounting Frames

Use (XX) to specify color: 02 = white, 20 = ivory, 25 = bright white, 80 = light ivory

MAX Series Mounting Frames:

Siemon's MAX mounting frames provide a solution for installing MAX modules in an environment where electrical Duplex or Designer style faceplates are desired. They are compatible with any Duplex or Designer style faceplate. The frames have recently been enhanced with mounting ears to keep frames flush. The ears can also be detached and used as spacers between the frames and mounting boxes.



Duplex Mounting Frames:

MX-E2F-(XX)
2-port Duplex mounting frame, accepts two flat MAX or Z-MAX outlets



MX-E2A-(XX)
2-port Duplex mounting frame, accepts two angled MAX modules*



MX-E4F-(XX)
4-port Duplex mounting frame, accepts four flat MAX and Z-MAX outlets



MX-E4A-(XX)
4-port Duplex mounting frame, accepts four angled MAX modules*



Designer Mounting Frames:

MX-D1Z-(XX)
1-port Designer mounting frame, accepts one flat or angled MAX or Z-MAX outlets



MX-D2Z-(XX)
2-port Designer mounting frame, accepts two flat or angled MAX or Z-MAX outlets



MX-D4Z-(XX)
4-port Designer mounting frame, accepts four flat or angled MAX or Z-MAX outlets



MX-D6F-(XX)
6-port Designer mounting frame, accepts six flat MAX or Z-MAX outlets



Use (XX) to specify color: 02 = white, 20 = ivory, 25 = bright white, 80 = light ivory

* Not compatible with Z-MAX outlets

For related product information request Spec Sheet(s):

- MAX® 6 Modules (PROD-SS-MX6)
- 10G 6A™ MAX Modules (PROD-SS-MX10G6A)
- 10G 6A F/UTP MAX Modules (PROD-SS-10G6MXS)
- Screened MAX 5e Modules (PROD-SS-MX5S)
- TERA® Outlets (PROD-SS-TRA0)

Because we continuously improve our products, Siemon reserves the right to change specifications and availability without prior notice.

MAX®, TERA® and 10G 6A™ are trademarks of Siemon

The Americas
Watertown, CT USA
Phone (1) 860 945 4200

Europe/Middle East/Africa
Surrey, England
Phone (44) 0 1932 571771

Asia/Pacific
Shanghai, P.R. China
Phone (86) 21 6390 6778

Japan
Tokyo, Japan
Phone (03) 5437 1580

PROD-SS-MXFUS Rev. B 4/09

© 2009 Siemon

WWW.SIEMON.COM



MX-SM® Surface Mount Boxes

Siemon's surface mount boxes provide users with exceptional versatility and robustness. Siemon surface mount boxes allow all standard MAX® modules and SC and LC fiber adapters to be used in surface mount applications. The compact and easily installed design offers multiple cable management features and supports UTP, Screened, coax and TERA® cabling styles, as well as fiber. Available in 1, 2, 4 and 6 port configurations, these products feature 10G optimized jack spacing for superior NEXT performance.



PATENTED

WORK AREA

Breakouts on three sides and bottom for cable/raceway entry

Label cover conceals screw for added security if desired

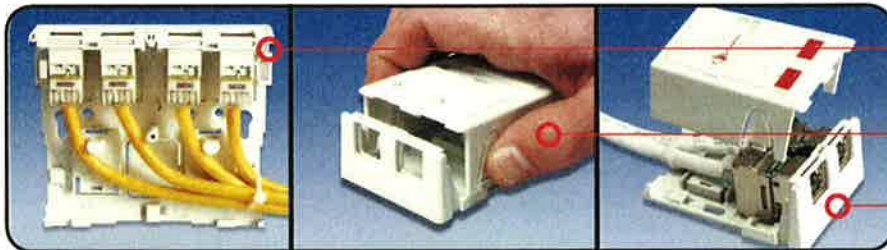
Snap-on cover with designation areas for color-coded icons/tabs and write-on labels

Built-in cable management posts ensure proper bend radius for copper or fiber

Available with MAX bezels or multimedia bezels to support all Siemon module types

Cable tie anchor points facilitate strain relief for cable

Optional spring-loaded shutter doors offer added protection from dust and other contaminants



Depth of box is optimized to maintain proper bend radius of cables

Left and right thumb release allow the cover to be easily removed

Compatible with all media types including UTP, Screened, coax, fiber and TERA

ORDERING INFORMATION

WORK AREA

MX-SM® Surface Mount Boxes:

Field-assembled surface mount boxes with MAX® bezels. Accepts flat MAX modules (ordered separately).

MX-SM(X)-(XX)-(X) Surface mount box with cover base, max beads, cable ties, adhesive tape and mounting screws

Parts	Color	Options
1 - 1 port	01 - Black	Blank - N/A
2 - 2 port*	02 - White	D - Spring Shutter Doors
4 - 4 port*	20 - Ivory	M - Magnets
6 - 6 port*	80 - Light Ivory	MD - Magnets and Doors



* Includes designation labels and label covers
Add "A" for optional magnets.

Z-MAX, MX-SMZ Surface Mount Boxes:

Field-assembled surface mount boxes for use with Z-MAX modules, TERA modules, or LC/SC duplex fiber adapters. They are also compatible with all other single port MAX modules, but require the use of icons to secure the modules into the bezel.

MX-SMZ(X)-(XX)-(X) Z-MAX Surface mount box with cover base, 2 port multimedia bezel, cable ties, adhesive tape and mounting screws

Parts	Color	Options
2 - 2 port*	01 - black	Blank - N/A
4 - 4 port*	02 - White	M - Magnets
6 - 6 port*	20 - Ivory	
	80 - Light Ivory	



* Includes designation labels and label covers

MX-SM Multimedia Bezels and Components:



MX-SMB-MM-XX)
2-port multimedia bezel



MX-SMB-SC-XX)
2-port bezel with one duplex SC adapter*



MX-SM-BLNK-XX)
1-port blank insert for MAX bezels

The Americas
Watertown, CT USA
Phone (1) 860 945 4200

Europe/Middle East/Africa
Surrey, England
Phone (44) 0 1932 571771

Asia/Pacific
Shanghai, P.R. China
Phone (86) 21 6390 6778

PROD-SS-MXSM Rev. D 4/09

© 2009 Siemon

WWW.SIEMON.COM

ISO 9001
CERTIFIED

ISO 14001
CERTIFIED





SPECIFICATION GUIDELINE FOR WM Series Wall Mounts

General

The Wall mount enclosure must be UL listed to UL60950-1 (Standard for Information Technology and Communications Equipment, Cabinet, Enclosure and Rack Systems.)

Dimensions shall be 24, 36 or 48”H x 21.25”W x 24.50”D (24” H available in 18”D)

Unit must be 3 “piece” sectional design using a continuous hinge between. Front and rear sections latch with “push-pull” catch and each section must lock independently. Wall mount to be reversible allowing for right or left hand swing. Top and bottom set up to accept fan assembly.

Black powder coat finish on 14-gauge steel.

Manufacturer must be ISO 9001:2000 registered.

Mounting -The base unit must have 2 pair of 19” rack mount rails that are tapped 12-24. Adjustable front to rear.

Cable Access -Rear section to have knockout in center back and top/bottom for conduit sizes 1, 2 & 3”. In addition integrated horseshoe knock-out must be standard for running cables that are already terminated onto a patch panel.

Doors -Doors to be plexi-glass or solid. Base unit must have gasketing for the doors.

Sides -Sides of center section to have venting slots on top and bottom

Cable Management- all 19” rack mounted cable management to be installed, preferably on the rear rails.

Power Strips- all 19” rack mounted power strips to be installed on the rear rails.

Fans- 2 low profile 75cfm fans to be installed in cabinet. (When ordered)

